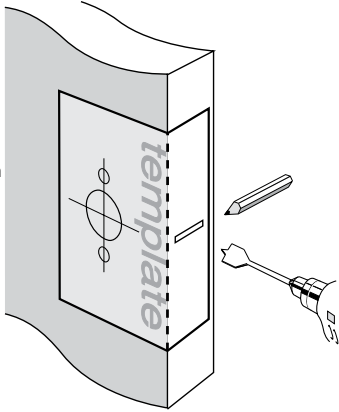


# Installation Instructions for Metaline/Leverline 600/610 Series Handle Sets

for passage & privacy applications for new doors and/or doors with pre-drilled holes

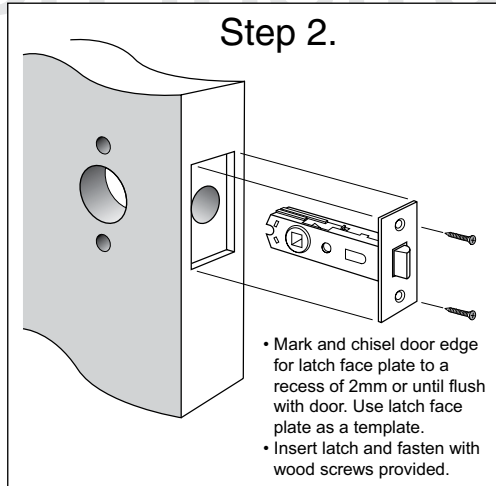
## Step 1.

- Fold template where indicated.
- Position template on door edge at desired latch height.
- Firmly hold template and mark latch height and handle fixing holes at 60mm backset (refer template).
- Measure door thickness and mark centre.
- Drill 25mm (1") latch hole.
- Note:** it is important to drill this hole squarely.
- Drill one 35mm hole & two 10mm holes through door face at required backset as marked on template.



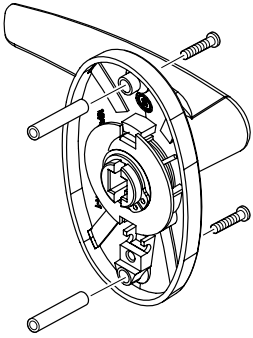
## Step 2.

- Mark and chisel door edge for latch face plate to a recess of 2mm or until flush with door. Use latch face plate as a template.
- Insert latch and fasten with wood screws provided.



## Step 3.

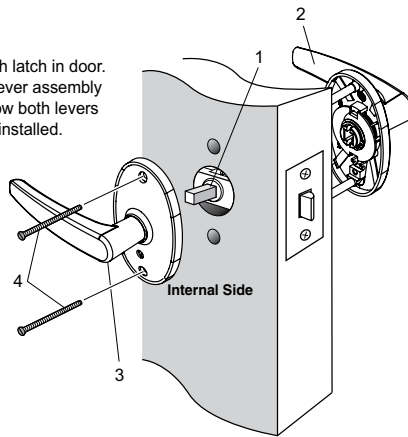
- Insert blind screws and brass posts to the lever/escutcheon assembly chosen to fit the external door face.



## Step 4.

### Install lever assemblies to door

- Insert square drive spindle (1) through latch in door.
- Identify which side of the door each lever assembly will need to be located in order to allow both levers to move in a downward motion once installed.
- Note:** for Privacy Lever versions Privacy Hole is underneath lever.
- Place one lever assembly (2) onto the square drive spindle.
- Place other lever assembly (3) into position, locating it onto the other end of spindle.
- Fasten both lever assemblies together with screws provided (4): Use long screws for thick doors and short screws for thin doors.

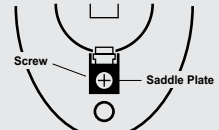


## SNIB ASSEMBLY

Privacy locking snib must be on escutcheon inside room. Instructions to change snib to opposite side:

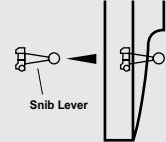
### Step 1

- Remove screw and saddle plate.



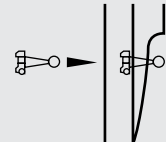
### Step 2

- Remove snib lever by pushing through hole.



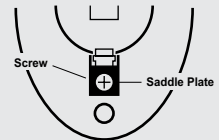
### Step 3

- Insert snib lever through hole in other back plate.



### Step 4

- Place saddle plate in position and fasten with screw.



**NOTE:** Carefully follow these instructions when installing. Screws to be tightened to a recommended 2.5Nm torque.



FOLD HERE

Mark centre-line of latch hole

Mark centre-line of latch hole



Fit here on door edge

Fit here on door edge

When 54mm hole exists, disregard drilling instructions for 35mm (1 3/8") and 6mm (1/4") holes.

35mm (1 3/8") hole (drill second)

10mm hole (drill first)

BACKSET 60mm (2 3/8")

BACKSET 70mm (2 3/4")

6mm hole (For Privacy Set. Hole only required at bottom of assembly)

**Note:** To operate emergency release, insert sharp object into outside hole and push to unlock.

**Gainsborough**  
ENTER WITH STYLE™

Gainsborough Hardware Industries Limited,  
Melbourne, Australia. A.B.N. 25 004 792 269  
[www.gainsboroughhardware.com.au](http://www.gainsboroughhardware.com.au)

PAIT 016  
AUG '12